

# Proposed Layout



Shoring



Collapsed Wall Building



Vehicular Rescue

## Regional Training Centers

In April 2007, Governor Kathleen Sebelius and Maj. Gen. Tod Bunting, director of Kansas Homeland Security and Kansas adjutant general, announced a proposal to develop five regional training centers to enhance the state's capabilities to defend against terrorism and respond to disasters and emergencies.

Four regional training centers will be developed in strategic locations around the state to ensure state and local first responders, the Kansas National Guard and public safety organizations have state-of-the-art training facilities. The Great Plains Joint Regional Training Center in Salina, which includes Smoky Hill Weapons Range, will serve as the training hub. The center currently has approximately 36,000 acres for air and ground training.

The regional training centers concept resulted from The Adjutant General's Department working with numerous state and local government agencies and public safety professional organizations to determine how best to integrate the needs of emergency responders, public safety and the National Guard into realistic training and exercise facilities.

Each of the new centers will be strategically positioned to reduce travel time for those seeking training.

State and federal partners who may consider using the regional training centers include: Kansas Fire Marshal's Office, Kansas Bureau of Investigation, Kansas Department of Transportation, Kansas Highway Patrol, Kansas Department of Health and Environment, Kansas Wildlife and Parks Department, Emergency Medical Services, Transportation Security Administration, emergency management, public and private industry, sheriff's departments, police departments, fire departments, university police, and other military Reserve components.



For information about Crisis City or the Regional Training Centers, contact Chief Warrant Officer 5 Mark Jensen (785) 861-3863; mark.h.jensen@us.army.mil

# CRISIS CITY

**A multi-use  
Homeland Security  
training facility for**

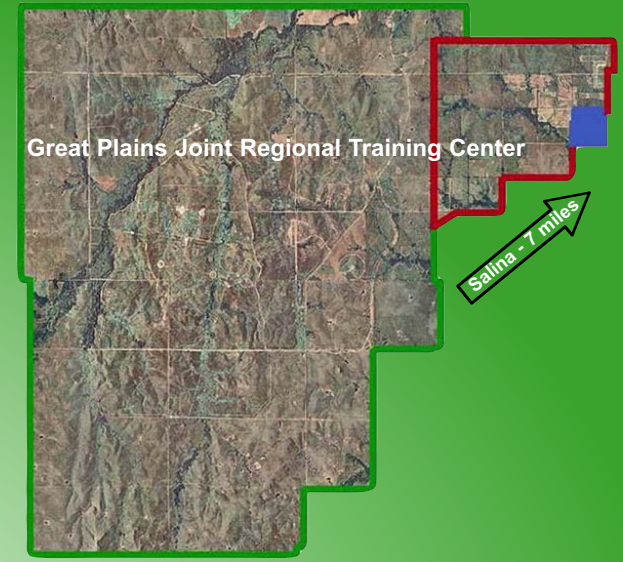
- **Law Enforcement**
- **Emergency Management**
- **Search and Rescue**
- **Fire**
- **Medical**
- **Public and Private Industry**
- **Military**

**Great Plains Joint  
Regional Training Center**

**Salina, Kansas**

## Key Elements:

- State funded and supported
- “Disaster City”-like design/approach
- First responder emergency training center
- Multi-discipline, multi-agency focus
- Small campus, adaptable and expandable
- Concrete/semi-permanent structures/training aids
- National Guard involvement will be primarily focused on Military Assistance to Civil Authorities
- Integrated with Eisenhower Center for HLS Studies



Owner: Federal Government  
Total land: 150 acres (6.5 million square feet)  
Perimeter: 10,386 feet

### BENEFITS

- Satisfies training needs of Kansas responders
- Provides discipline-validated training
- Provides opportunities for training certification/NIMS compliance
- Facilitates the cooperation of state and local agencies, private industry and non-governmental organizations in training events; and
- Meets customer training needs/satisfaction to the point that Crisis City expansion into other regions of the state is demanded by Kansas first responders, emergency management professionals and elected officials.



Modular Training Structure



Rail Rescue



Rubble pile for search and rescue training